

Waihora Ellesmere Trust Annual Report 2013/4



The Trust

- Steady membership of around 100 – 120 individual/family members plus 5 organisations
- 292 subscribers to the website/newsletter
- 2 staff members - General Manager and Finance Manager
- Contracted Restoration Consultant, working on projects and also with schools
- Several active volunteers, working on specific projects and assisting with events
- MOUs with ECan and CCC, reviewed MOU with TAK, new MOU with SDC
- Funding from SDC, ECan, CCC and project funding
- Regular website updates, newsletters and articles in local media



Some highlights for the year.....

Sustainable Drain Management Project

Educate Facilitate Activate

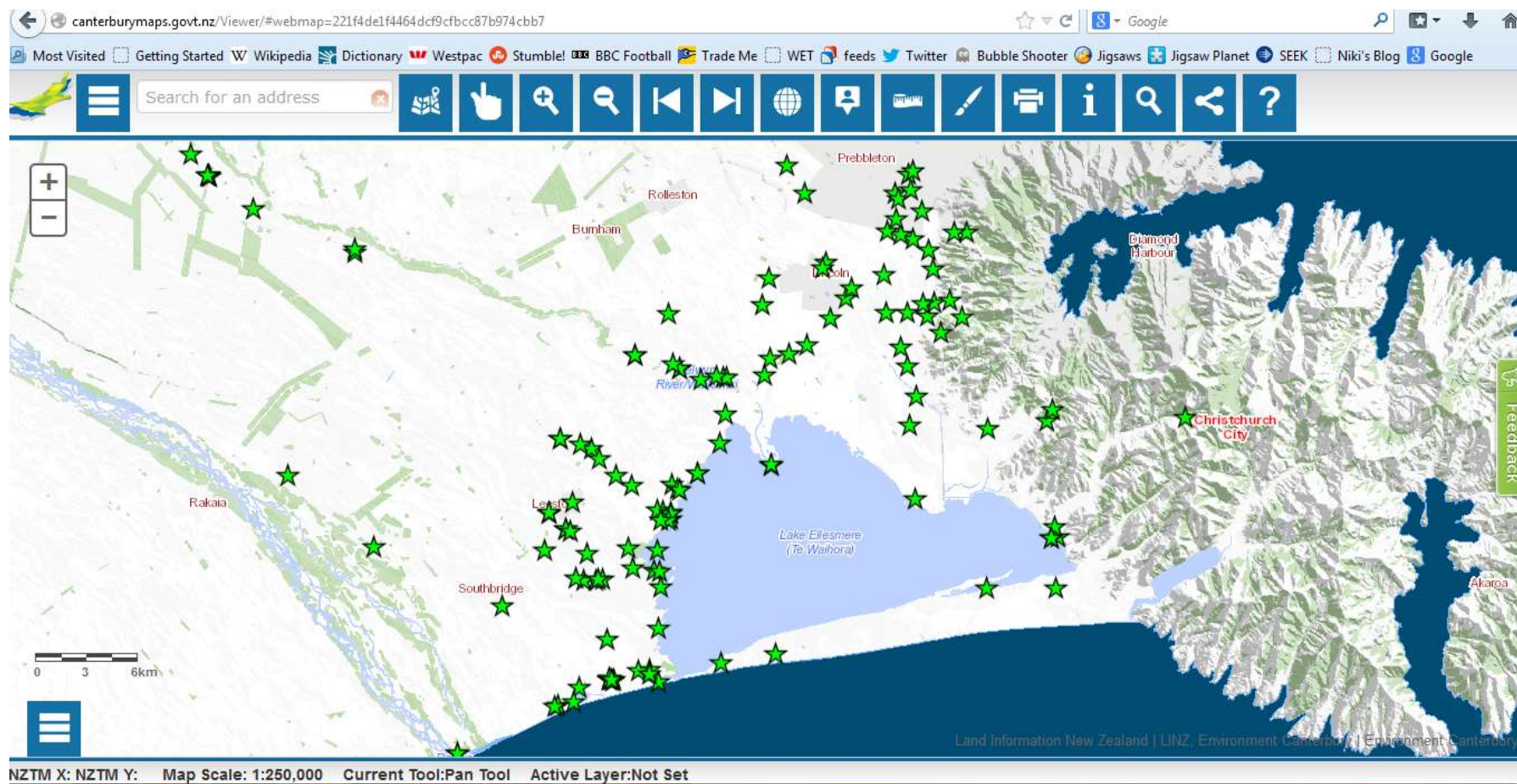
Successfully completed all milestones for this two year project, including:

- 20 riparian restoration plans over 2 years
- In year two, a short video and a comprehensive booklet
- Meetings and field trips, including a community meeting for the Osbornes and Lower Halswell Drainage area and a bus trip around the lower Halswell catchment.
- Presentations & displays at several events
- Supported implementation of new demo sites, including allocating 10,000 combiguards
- A summer scholar project for year two

Funders: SFF, CEF, CCT, plus support from ECan and SDC

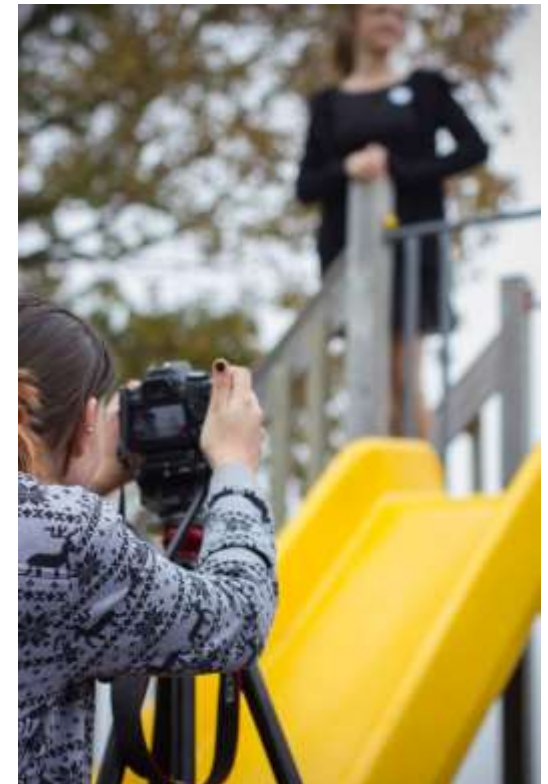


Through the Selwyn-Waihora Active Restoration Forum worked with partners to bring together and make available data about biodiversity projects in the catchment.





With Inspiring Stories Trust, hosted a lake themed film making workshop for young people.

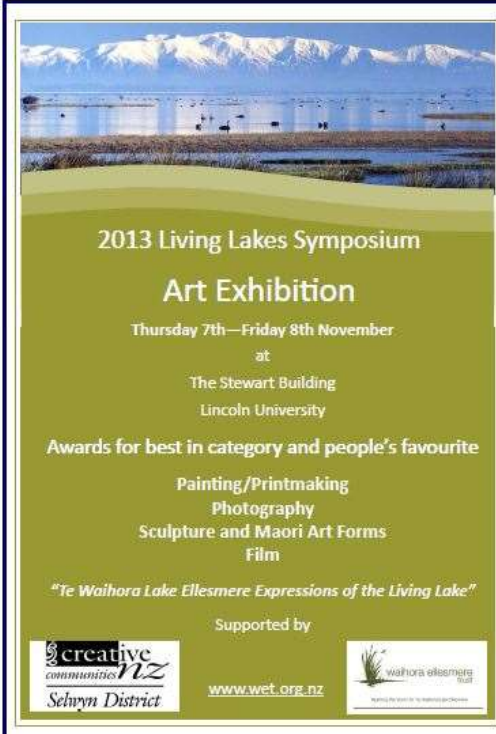


Active involvement in several volunteer restoration projects, including the Canterbury Plantout, the Green Footprint Project, and working with several local schools.



What's coming up for 2013/14

- Symposium and WET Art Exhibition – Nov 7 & 8
- Working closely with Whakaora Te Waihora on several key projects, including lake margin project planning and facilitating discussions about a lake visitor/research centre
- 2014 bird survey – Feb 22
- And lots more.....



2013 Living Lakes Symposium
Art Exhibition
 Thursday 7th—Friday 8th November
 at
 The Stewart Building
 Lincoln University
 Awards for best in category and people's favourite
 Painting/Printmaking
 Photography
 Sculpture and Maori Art Forms
 Film
"Te Waihora Lake Ellesmere Expressions of the Living Lake"
 Supported by
 creative communities NZ Selwyn District
 www.wet.org.nz
 waihora ellesmere trust



LIVING LAKE SYMPOSIUM
 Te Waihora/Lake Ellesmere 2013 - measure to manage

Register now for the Te Waihora/Lake Ellesmere (and Catchment) Symposium

November 7th and 8th at Lincoln University

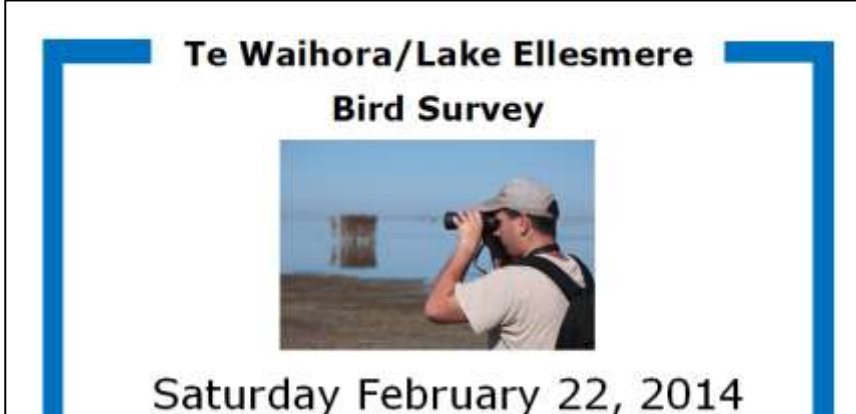
Day 1
 Thursday 7 November
 Measure to manage - updates on the state of environmental management
 The first afternoon session will be a special afternoon session on the lake margin project
 Thursday evening - night talk and quiz
 There will be a 2013 Awards for Best in Category and People's Favourite at 6pm

Day 2
 Friday 8 November
 Managing natural resources - from catchment to lake to water treatment, and water to the ocean
 The afternoon session for the day will be a special session on the lake margin project
 Friday evening - night talk and quiz
 There will be a 2013 Awards for Best in Category and People's Favourite at 6pm


Get a registration form and full details please email: www.wet.org.nz
 Or contact: Ashleigh Latham, Waihora Ellesmere Trust
 081 455 8988
 (International Conference reception - ask for Ashleigh Latham)
 081 455 8988
 email: www.wet.org.nz

www.wet.org.nz

Environment Canterbury
 Te Whanga o Māui
 Christchurch City Council
 Selwyn District Council
 Waihora Ellesmere Trust



**Te Waihora/Lake Ellesmere
 Bird Survey**



Saturday February 22, 2014