

Te Waihora/Lake Ellesmere

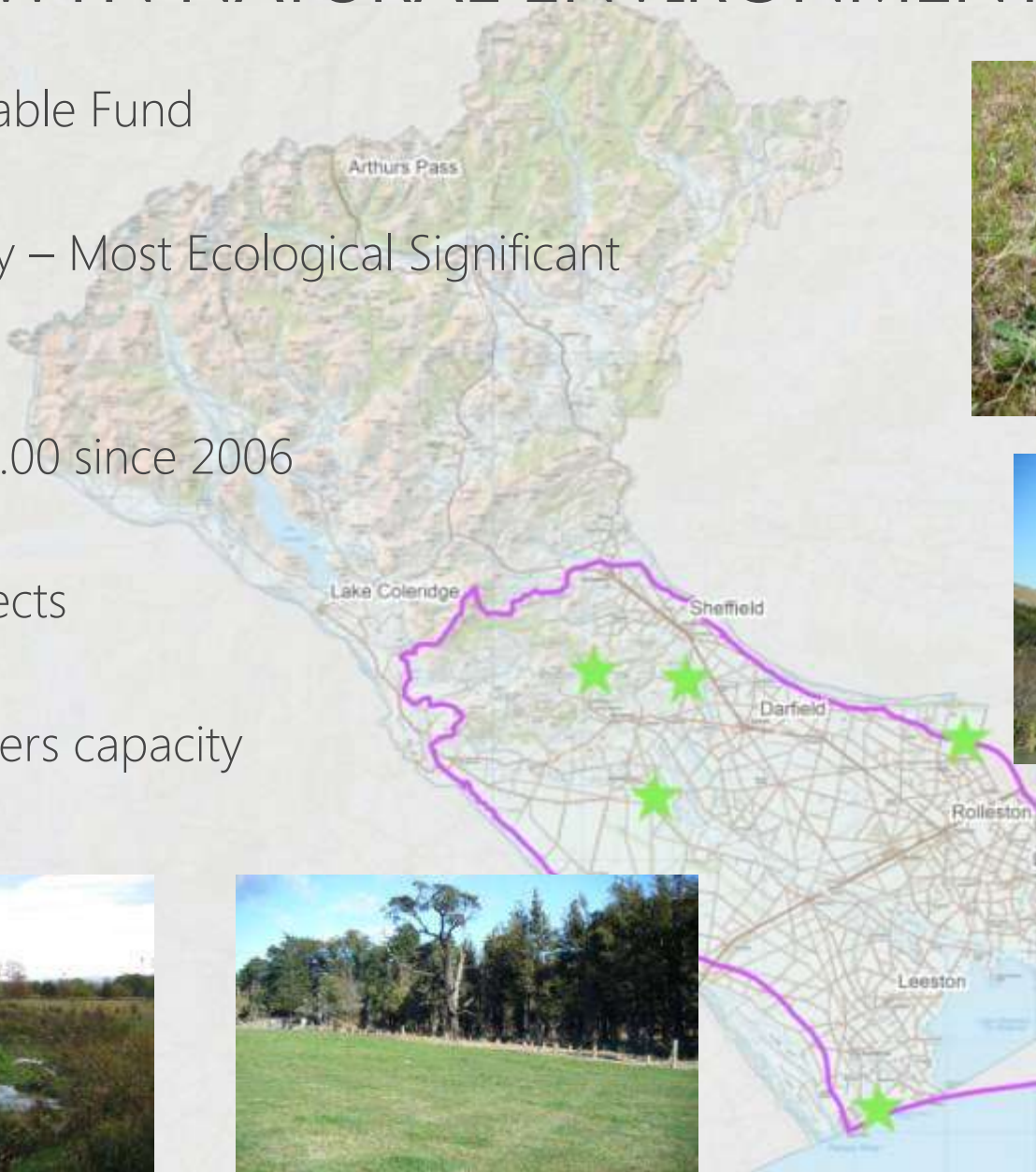
Selwyn District Council Restoration Initiatives

SDC RESTORATION INITIATIVES

- Selwyn Natural Environment Fund
- Council Land/Infrastructure
- Council/Community Initiatives & Collaboration

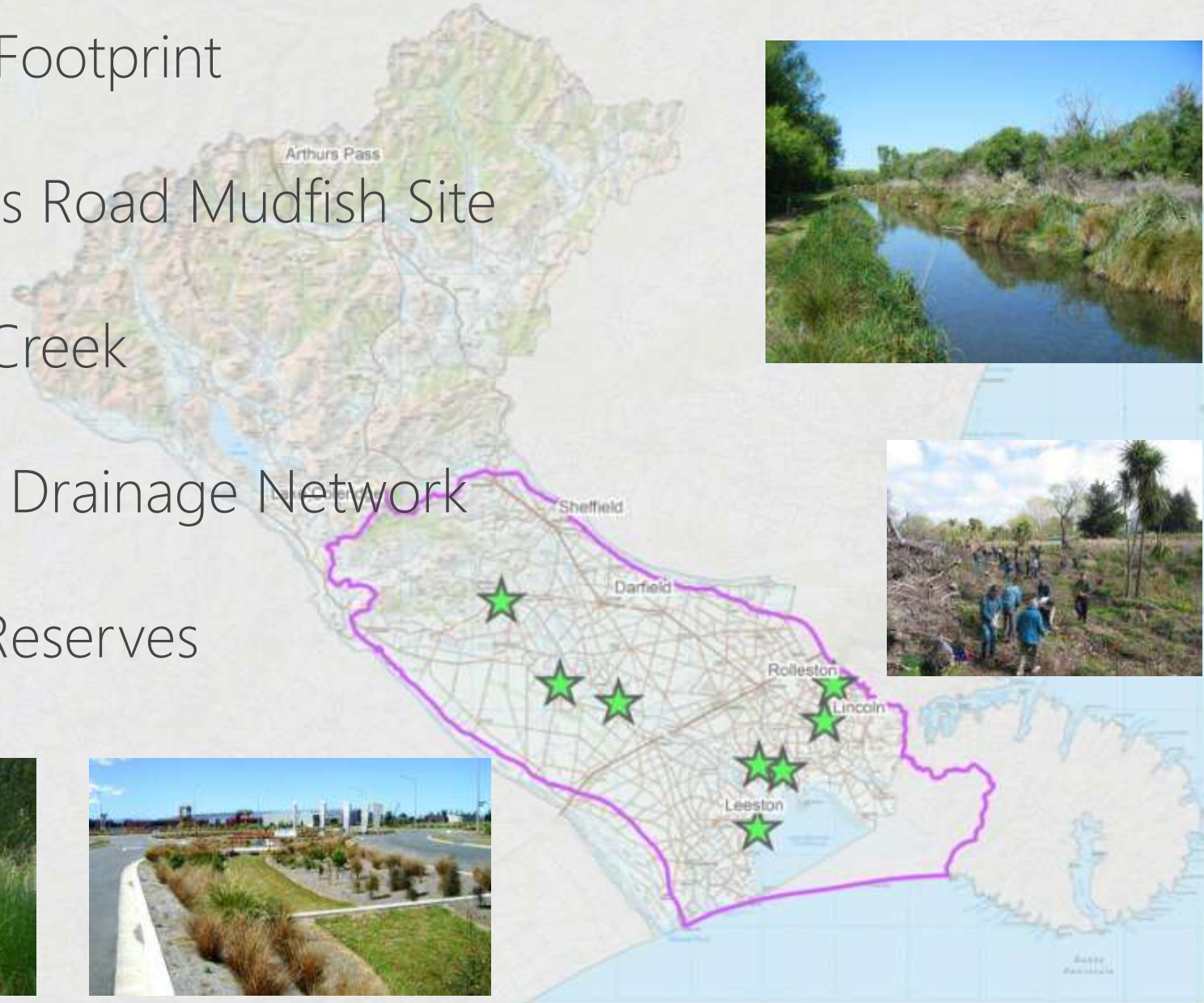
SELWYN NATURAL ENVIRONMENT FUND

- Contestable Fund
- 1st Priority – Most Ecological Significant Sites
- \$151,000.00 since 2006
- 35+ Projects
- Landowners capacity



SDC LAND/INFRASTRUCTURE

- Green Footprint
- Mitchells Road Mudfish Site
- Boggy Creek
- Council Drainage Network
- Urban Reserves



COLLABORATION

- Waihora Ellesmere Trust
- Te Ara Kakariki
- Various EnviroTown Trusts
- Fish & Game
- QEII Trust
- DoC
- GreenFootprint

