

CANTERBURY
PLANTOUT 2013



TE ARA
KĀKĀRIKI
GREENWAY CANTERBURY TRUST

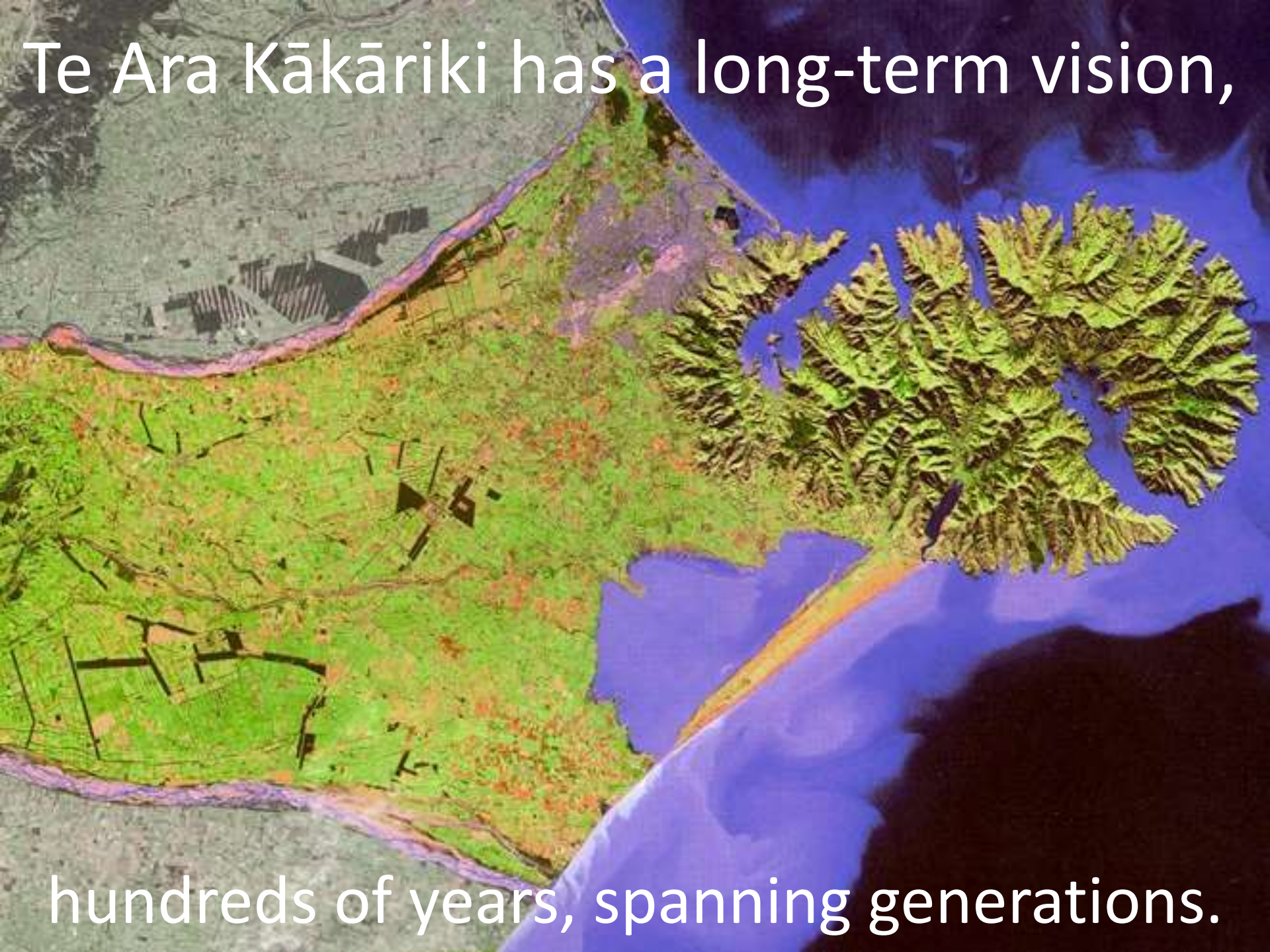


**Three years on, is the Canterbury
Plantout succeeding?**



Who are we?

- ‘Te ara’ means ‘pathway’
- ‘Kākāriki’ means ‘green’
- ‘Kākāriki’ – also name of the native parakeet
 - once widespread in the upland valley forests of Canterbury
 - rare, icon species
 - an inspiration for Te Ara Kākāriki



Te Ara Kākāriki has a long-term vision,

hundreds of years, spanning generations.



Greendale golf course 2010



Greendale golf course 2013



Coalgate reserve 2010



Coalgate reserve 2013



Horrorata golf course 2011



Horrorata golf course 2013



Coes Ford 2011



Coes Ford 2013

CANTERBURY PLANTOUT 2013

Saturday
7th & 21st
September



A fun day out helping restore our native habitats

Join us for the 2013 Canterbury Plantout, a fun day outdoors with the opportunity to see new places and meet new people. All meals, activities and transport will be provided. We need you and your community to help make a difference by putting over 6000 native plants back on the Canterbury Plains in just two days.

There will be activities for kids, live music with dinner and an opportunity to talk to experts about projects in Canterbury.

A free bus service is available for volunteers, picking up from New Brighton, Ilam, Jellie Park, Sydenham, Hornby, Halswell, Tai Tapu, Lincoln, Rolleston, Springston, West Melton, Darfield and Kirwee.

Register today at www.kakariki.org.nz and help us make this project a success



For more information
or to register go to:

www.kakariki.org.nz

Your \$5 registration fee
provides:

- Lunch, afternoon tea and dinner
- Reusable travel mug
- Live music
- All transport

Upper Selwyn Sat 7th September

- Buses depart 9.15am from furthest destinations
- Planting begins at 10.35am
- Lunch at 12.20pm, then two planting sessions
- Dinner and music from 5.15pm
- Buses leave at 6.15pm sharp
- Registration packs will be emailed 1 week before event

Registration closes 30th August

Lower Selwyn Sat 21st September

- Buses depart 9.00am from furthest destinations
- Planting begins at 10.15am
- Lunch at 12.00pm, then two planting sessions
- Dinner and music from 5.30pm
- Buses leave at 6.30pm sharp
- Registration packs will be emailed 1 week before event

Registration closes 13th September



**TE ARA
KĀKĀRIKI**
GREENWAY CANTERBURY TRUST
www.kakariki.org.nz



Whakaora Te Waihora
Te Rōnanga o Ngāi Tahu



Te Rōnanga o Ngāi Tahu



Environment Canterbury Regional Council



Ministry for the Environment
Kaitiaki Take Kōwhiri

Community Environment Fund



WWF®



Selwyn DISTRICT COUNCIL



Canterbury Community



Fonterra Dairy for Life



THE ISAAC CONSERVATION AND WILDLIFE TRUST
A study in conservation

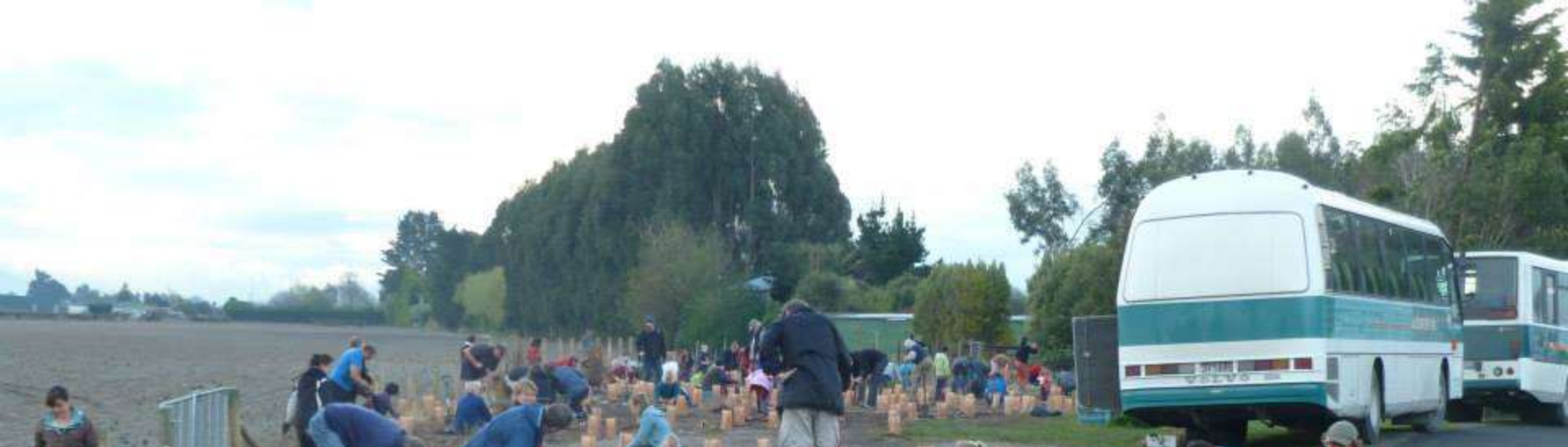


waihora ellesmere trust









Year	Sponsors	Volunteers	Native plants	Sites	Days
2009	1	30	1000	4	2
2010	2	50	2000	8	4
2011	5	390	4800	10	4
2012	6	550	7700	11	4
2013	8	540	8000	13	5



2012 feedback

- 82% said the day was excellent
- 12% said good
- 93% would come back
- Only 1% said they wouldn't return



Green Ribbon award



Sensational Selwyn Award





2013 Funders and Partners



Community Environment Fund





TE ARA
KĀKĀRIKI
GREENWAY CANTERBURY TRUST



office@kakariki.org.nz

www.kakariki.org.nz

0210 293 3003