A photograph of a waterfall cascading over mossy rocks in a forest. The water is white and frothy as it falls, and the surrounding rocks and vegetation are covered in vibrant green moss. The scene is set in a dark, wooded area with some ferns visible on the left.

# Canterbury mudfish survey – where around the lake are they?

Anita Spencer  
Christchurch Field Base









# Threats to Canterbury mudfish

- Habitat destruction





# Threats to Canterbury mudfish

- Habitat destruction
- drought







# Threats to Canterbury mudfish

- Habitat destruction
- Drought
- Predation



# Threats to Canterbury mudfish

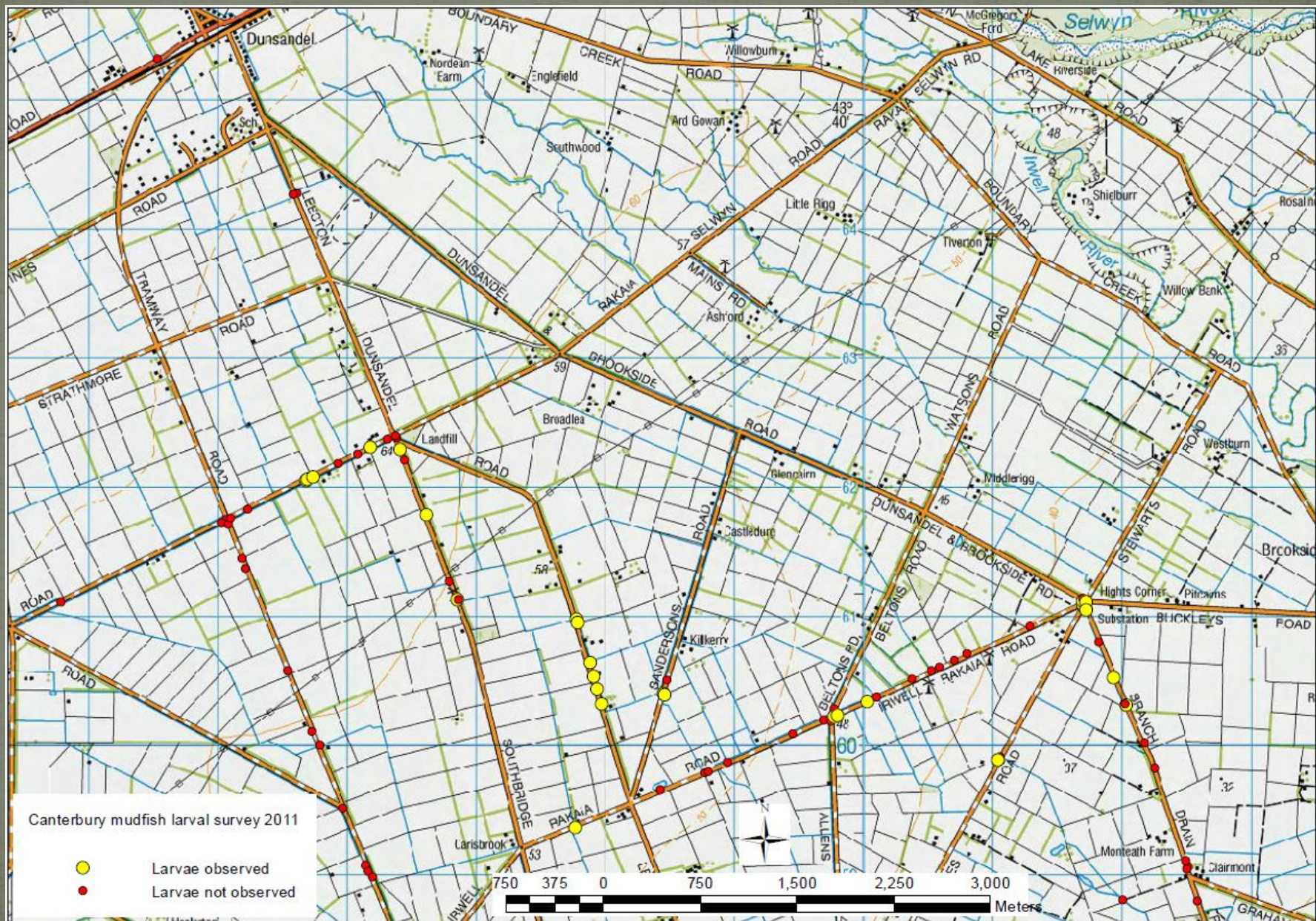
- Habitat destruction
- Drought
- Predation
- Removal of fish passage barriers

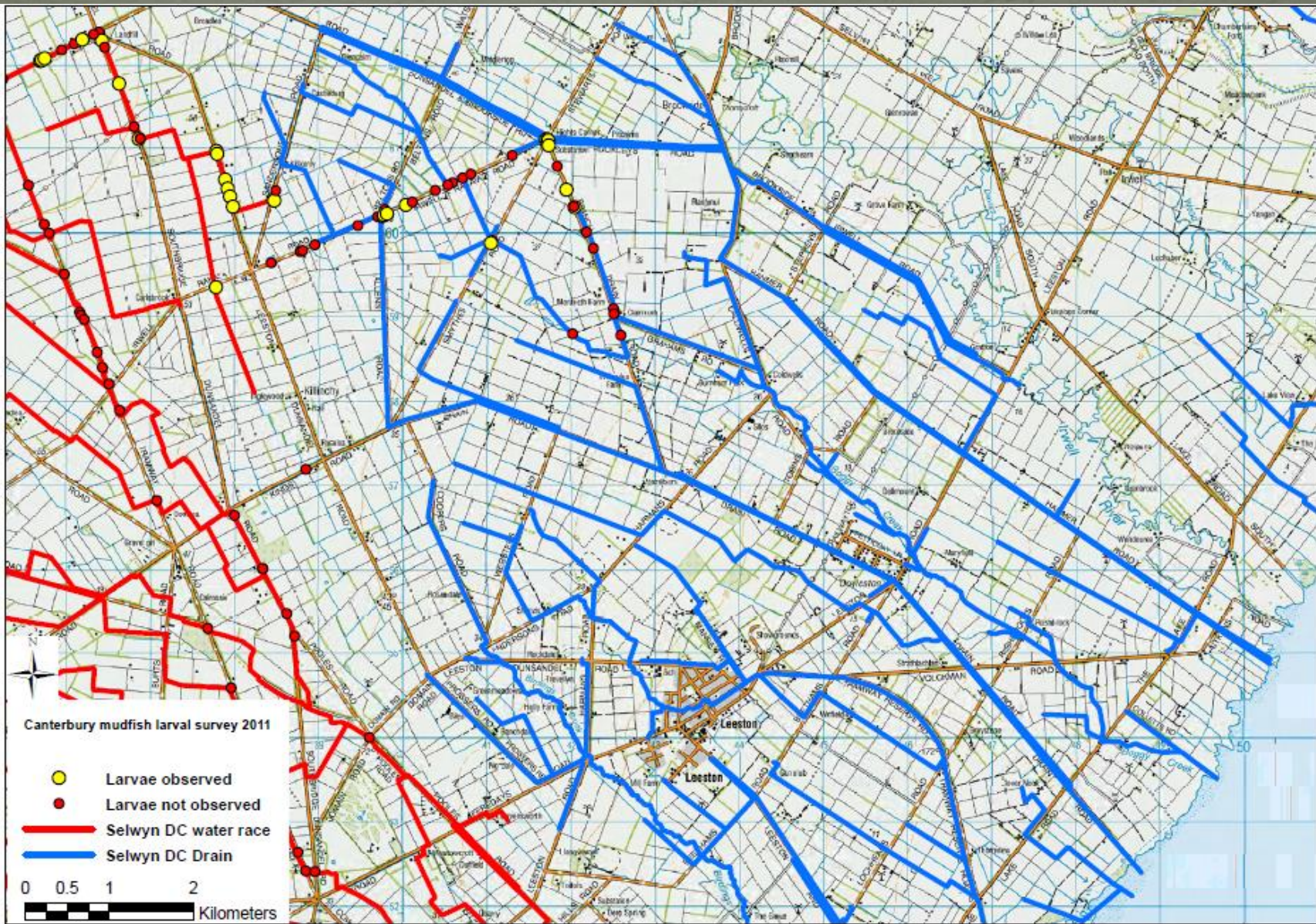












# Headwaters of Boggy Creek on Belton Rd

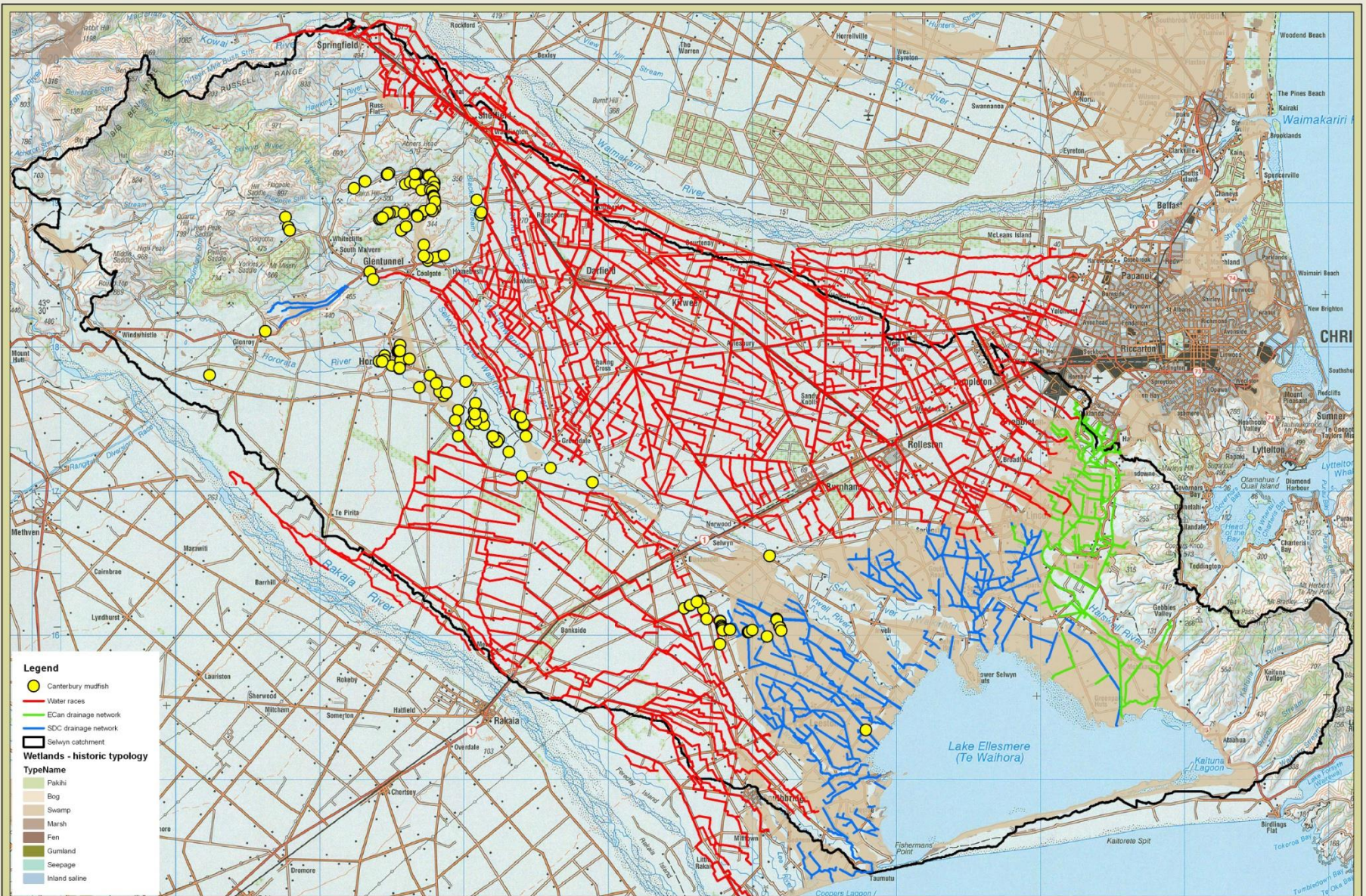


# Section of Drain Rd waterway



# Tributary of Boggy Creek at Heights corner





**Legend**

- Canterbury mudfish
- Water races
- ECan drainage network
- SDC drainage network
- Selwyn catchment

**Wetlands - historic typology**

TypeName
<span style="background-color: #d9ead3;"> </span> Pakihi
<span style="background-color: #f4cccc;"> </span> Bog
<span style="background-color: #fce4d6;"> </span> Swamp
<span style="background-color: #f4cccc;"> </span> Marsh
<span style="background-color: #fce4d6;"> </span> Fen
<span style="background-color: #d9ead3;"> </span> Gumland
<span style="background-color: #d9ead3;"> </span> Seepage
<span style="background-color: #d9ead3;"> </span> Inland saline

Selwyn River catchment Canterbury mudfish (*Neochanna burrowsius*) distribution







# Thanks to:

- Leanne O'Brien
- Helen McCaughan and Peter Langlands for photos

