

TE WAIHORA LIVING LAKE SYMPOSIUM 2017

Streams of Action Ngā Au Tūmahi

Photo: © DOC

Field Day Programme *Thursday, 9 November, 9am*

Meet at Lincoln University, Orchard Carpark (gate 3 Springs Rd)



Te Waihora/Lake Ellesmere is one of New Zealand's most important wetland systems. It is an area of cultural, natural, historic, recreational and commercial importance to many people and communities.

The outstanding values of the lake are recognised in a National Water Conservation Order as: habitat for wildlife, indigenous wetland vegetation, and fish; and as being of significance in accordance with tikanga Maori in respect to Ngāi Tahu history, mahinga kai and customary fisheries. Internationally, Te Waihora/Lake Ellesmere is significant for its birdlife abundance and diversity.

We will be stopping at five different locations around Te Waihora through the catchment and hearing from a number of experts and locals about the lake and some of the great projects that are underway.



Photo: © Robin Smith

Please note:

- The fieldtrip is a full day so we will be leaving Lincoln promptly at 9am.
- If there are special nibbles etc you want enroute, then please bring these with you.
- We will be walking short distances at each location. It can be uneven underfoot in places so please take care.
- We are providing packed lunches. If you have requested a vegetarian or gluten free lunch, please look for the labels on lunch bags.
- Sunblock, hand sanitiser, and water will be available on the bus.
- Toilets are located at Glentunnel, and Timberyard Point (Lakeside Domain).
- Please don't wander off as we don't really want to leave anyone behind!

We will be returning to Lincoln carpark by 5pm and then you are invited to Mrs O's on campus for some refreshments etc.

Any questions please email symposium@wet.org.nz
or give Tina a call on 027 201 1000

START/FINISH,
LINCOLN UNIVERSITY,
ORCHARD CARPARK,
GATE 3, ENGINEERING DR

1 ASHLEY DENE RESEARCH
& DEVELOPMENT STATION,
LINCOLN UNIVERSITY,
ASHLEY DENE RD

Learn more about some of the research Lincoln University and Landcare Research are working on in relation to land use change and its links to water quality.

2 WHITECLIFFS RD BRIDGE,
GLENTUNNEL

Hear more about swimability, catchment flows, and the history of the upper catchment.

3 HORORATA MUDFISH,
CORDYS RD, HORORATA

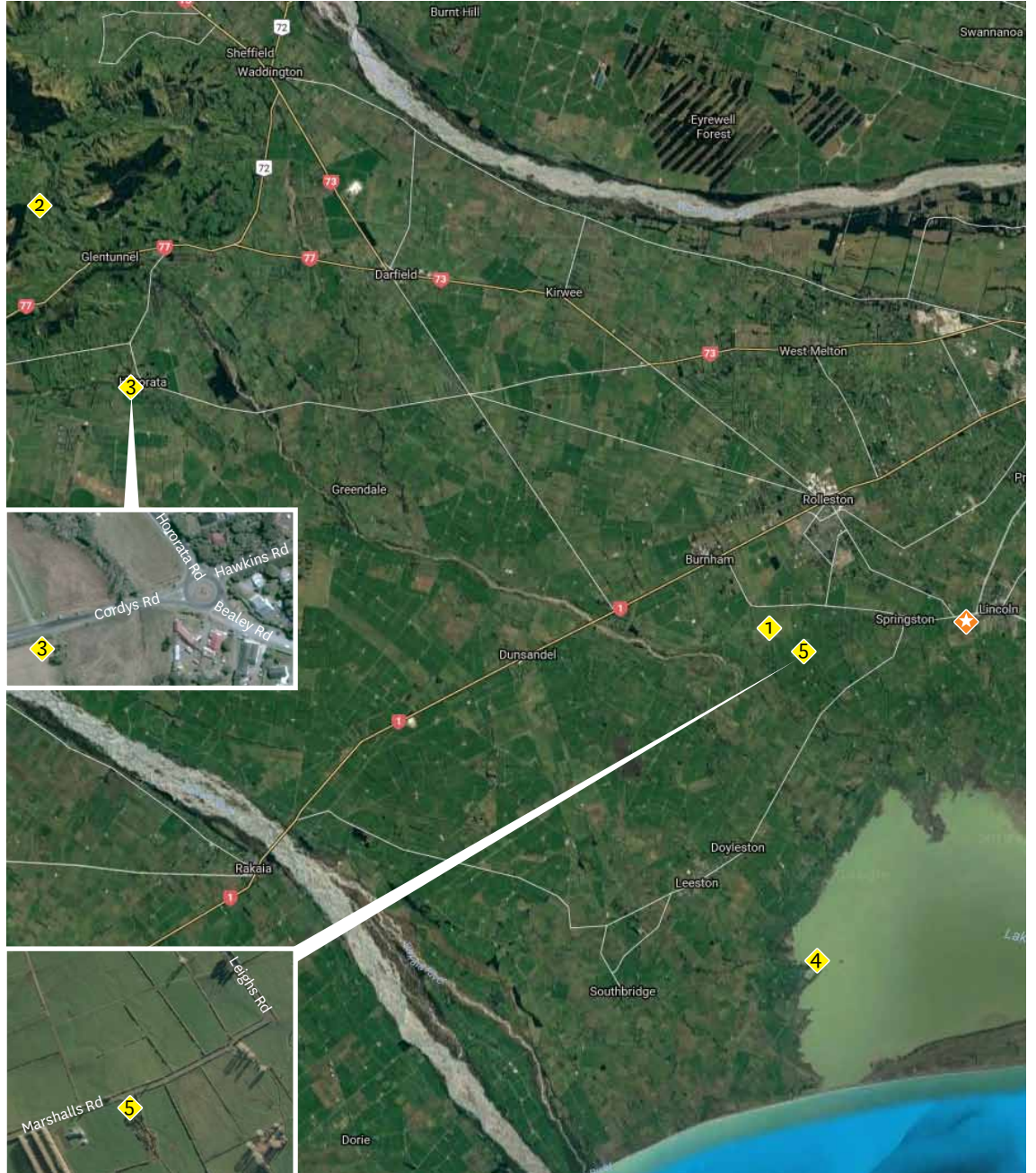
Visit a local mudfish restoration area, and learn more about the mudfish, their habitat and the restoration work.

4 TIMBER YARD POINT/
LAKESIDE DOMAIN,
TIMBER YARD RD

A quick stop to realign ourselves with the lake and some of the key aspects here at the seaward end of the catchment, including monitoring stations, lake opening, macrophyte bed, cultural value and eel fisheries.

5 SILVERSTREAM,
MARSHALLS RD,
SPRINGSTON

Our last stop on the trip and a chance to experience some amazing on-farm habitat restoration and development work.



Symposium Partners:



Thanks to all our event sponsors for making this symposium possible, and for helping us to keep registrations fees low:

GOLD SPONSORS:



SILVER SPONSORS:



BRONZE SPONSORS:

